

CBS MK SERIES

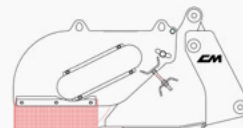


EM POWER
LEADS
THE WAY

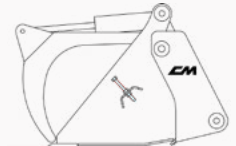
It is a 3-in-1 sweeper. CBS Multi Kit is composed of a grab sweeper designed to collect small and large debris since, besides facilitating discharge from heights, it collects large pieces that would otherwise be impossible to collect with the brushes only. Thanks to two front upper hooks, the brushes can be removed and it is possible to use only the Grab Sweeper bucket. Moreover, when necessary, two arms can be installed in order to transform the CBS Multi Kit into a bucket with grippers to collect dry twigs and loppings.



Grab Model



Gripper kit



Brushes kit

STRENGTHS

- Inner hydraulic motor
- Chain transmission
- Increased PPL internal brush \varnothing 600 mm as standard
- Adjustment of brush wear
- Easy to inspect and replaceable bearings
- Easy and safe brush replacement
- Easy and uncomplicated maintenance



The kit changing is done by quick couplings both in the mechanic and in the hydraulic part

OPTIONAL

- Side cleaning brush \varnothing 600 with independent hydraulic motor available in PPL, mixed steel, steel
- Watering kit by pressure with 12 V pump and sprayers, 100 lt tank
- Watering kit by pressure for operating machines with own tank
- Mixed steel internal brush
- Side brush nozzle
- Bolted under blade
- Connector 8-14 poles 12 V

DATA SHEET		CBS MK 150	CBS MK 175	CBS MK 200
Total width	mm	1620	1870	2120
Working width	mm	1500	1750	2000
Weight	kg			
Grab Model		300	370	410
Gripper Kit		390	430	510
Brushes kit		460	530	660
\varnothing Brush	mm	600	600	600
Capacity	l	350	420	500
Oil Flow	l/min	60/75	60/75	60/75
Pressione	bar	175	175	175
Max. Pressure	w x d x H	1700 x 1500 x H 900	1950 x 1500 x H 900	2200 x 1500 x H 900

Weights and dimensions could vary without notice. Weight does not include the coupler.



Canalization / Subsoil



Derrailments



Construction industry



Tunnel / Closed spaces



Agricultural / Forest maintenance



Recycling



Quarries / Mines



Streets